

X FACTOR

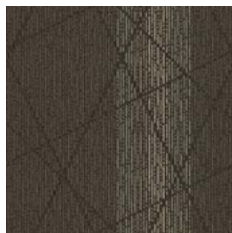




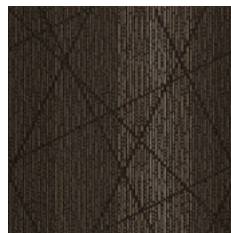
CONSTRUCTION	LOOP
PILE FIBER COMPOSITION	100% Nylon (Polyamide 6)
YARN TYPE	BCF
DYE METHOD	Solution Dyed
PILE WEIGHT	750 g/m ²
NUMBER OF TUFTS	251220/m ²
TUFTING GAUGE	1/12"
PRIMARY BACKING	Non-Woven
SECONDARY BACKING	StableShield - 100% Vinyl
OPTIONAL BACKINGS	Recova -PU Cushion, EcoShield -100% Recycled Vinyl
TILE SIZE	50 cm x 50 cm & 50 cm x 100 cm
PILE HEIGHT	3.0 mm / 6.5 mm
TOTAL PILE HEIGHT	8.5 mm
PILE TREATMENT	INVISTA Anti-Soil Treatment, Anti-Microbial (Optional)
RECOMMENDED INSTALLATION	Quarter Turn or Brick: Tile Brick, Basket, Half Basket, Herringbone: Plank

SPECIFICATIONS

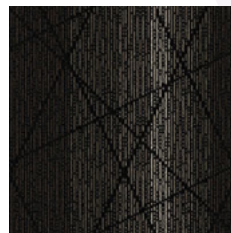
COLOURLINE



X FACTOR - 746



X FACTOR - 747



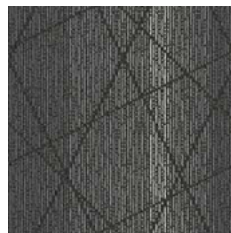
X FACTOR - 748



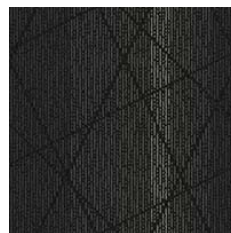
X FACTOR - 757



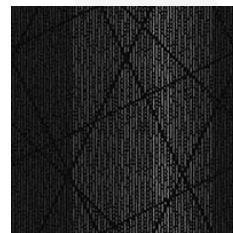
X FACTOR - 758



X FACTOR - 777



X FACTOR - 778



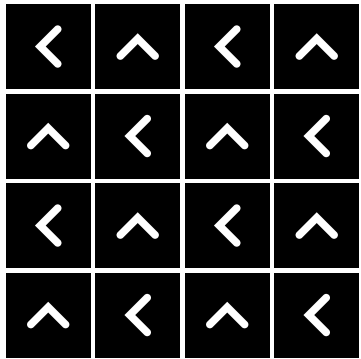
X FACTOR - 779



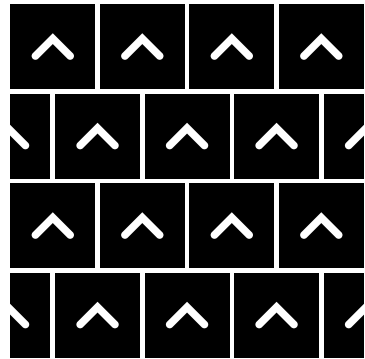


HOW TO INSTALL

QUARTER TURN



BRICK





Standard
CARPETS

www.standardcarpets.com